



Autumn 2016

**INSIDE THIS ISSUE:**

NATIONAL LEADERSHIP NEWS



Ohio State Co-Leads National Precision Medicine Trial to Treat AML

The Ohio State University Comprehensive Cancer Center – James Cancer Hospital and Solove Research Institute (OSUCCC – James) will play a leadership role in a groundbreaking, collaborative clinical trial for acute myeloid leukemia (AML) sponsored by the Leukemia & Lymphoma

Society. Known as **“Beat AML,”** the trial represents unprecedented collaboration among top leukemia researchers and medical centers, non-profit organizations, pharmaceutical companies and a leading genomics information company to advance treatment for AML, a deadly disease that affects 20,000 Americans annually.

John C. Byrd, MD (above), a Distinguished University Professor at Ohio State, where he holds the D. Warren Brown Designated Chair in Leukemia Research and directs the Division of Hematology, serves as co-principal investigator and chief medical officer for the “Beat AML” trial. The local arm of the trial will be led by **Alice Mims, MD**, and **William Blum, MD**, both of the Division of Hematology at Ohio State.

“Beat AML” was announced on Oct. 17 by **Vice President Joe Biden**, along with many new Cancer Moonshot Initiative-inspired projects across industry, non-profit and government. [Read more and watch a video:](#)

Statewide Lung Cancer Clinical Research Initiative Launched

The OSUCCC – James is set to launch a statewide clinical research initiative that takes aim at lung cancer, the No. 1 cancer killer among men and women in the United States, with more people dying from lung cancer than colon, breast and prostate cancers combined.

Led by **Peter Shields, MD**, **David Carbone, MD, PhD**, and **Mary Ellen Wewers, RN, PhD, MPH**, the initiative is called **Beating Lung Cancer - in Ohio (BLC-IO)**

and will be supported by a \$3 million grant from Pelotonia, an annual grassroots bicycle tour that raises money for cancer research at the OSUCCC – James. The study will involve an existing network of more than 50 partner hospitals from communities across Ohio that was established as part of a previous Pelotonia-funded statewide cancer initiative. Recruitment for the new initiative will take place over three years starting in March 2017. [Read more:](#)



The James Earns Press Ganey Guardian of Excellence Award® for Patient Experience

The James Cancer Hospital and Solove Research Institute has received a **2016 Press Ganey Guardian of Excellence Award for patient experience in inpatient care and HCAHPS** (Hospital Consumer Assessment of Healthcare Providers and Systems). Press Ganey, the nationally recognized leader in measuring patient experience, presents the Guardian of Excellence Award only to organizations that have achieved the 95th percentile (in the top 5 percent of all

hospitals in the United States) or higher overall rating in each reporting period during a given year. [Read more:](#)

[New Recruits »](#)
[Key Grants, Awards & Honors »](#)
[Featured Study »](#)
[Prominent Studies »](#)
[Featured Clinical Trial »](#)
[Pelotonia »](#)
[Featured Events »](#)
[Opportunities »](#)
[Visit cancer.osu.edu »](#)
[Read OSUCCC – James blog »](#)


RESEARCH FUNDED BY
PELTONIA

Ohio State Cancer Team Named Finalist for National Compassionate Caregiver of the Year Award

The multidisciplinary [Medical Intensive Care Unit \(MICU\) team](#) at the OSUCCC – James has received national recognition for its compassionate care model as **one of six finalists from across the United States for the 2016 National Compassionate Caregiver of the Year (NCCY) Award**.

The honor is bestowed annually by The Schwartz Center for Compassionate Healthcare to celebrate excellence in compassionate healthcare. Since 1999, the Schwartz Center has honored outstanding healthcare professionals who display extraordinary devotion and compassion in caring for patients and families. The James MICU is the first team (versus individual caregiver) to be named a finalist in this national recognition program. [Read more:](#)



Photo Credit: The Schwartz Center



Survey: Majority Under 35 Think E-Cigs Are Safer; Studies Aim to Find Out

Most Americans under age 35 think that using electronic cigarettes does not cause as much damage to lung health as compared with traditional cigarettes, according to results from a new national consumer survey. In the survey, which included more than 2,000 people under 35, 44 percent of respondents reported believing that e-cigarettes are less harmful to the lungs than traditional cigarettes. Among men, that number jumped to 54 percent who think e-cigarettes are safer. The OSUCCC – James is recruiting healthy volunteers who use tobacco products for two clinical

studies under way to evaluate the health effects of electronic cigarettes (known as “e-cigs” or “vaping”) and other tobacco products. [Read more:](#)

NEW RECRUITS

Renowned Scientists Lead Genomics Institute at Nationwide Children’s Hospital

Elaine Mardis, PhD, and **Rick Wilson, PhD**, who formerly co-directed the prestigious McDonnell Genome Institute at Washington University in St. Louis, have joined The Ohio State University College of Medicine and Nationwide Children’s Hospital (NCH), where they are leading a new genomics institute. Mardis and Wilson are among the most respected and prolific teams in science today. Collectively, they have played key roles in many of the most notable federally funded genomics research initiatives, including the Human Genome Project, the Cancer Genome Atlas, the Human Microbiome Project and the 1,000 Genomes Project. [Read more:](#)



Mardis



Wilson



Lessnick Directs Center for Childhood Cancer and Blood Diseases at NCH

Stephen Lessnick, MD, PhD, has joined The Ohio State University College of Medicine as a professor in the Division of Pediatric Hematology and Oncology, and as director of the Center for Childhood Cancer and Blood Disorders at Nationwide Children’s Hospital. As director, Lessnick leads a team of pediatric researchers who are working to better understand the development of childhood cancer and to transform diagnostic and treatment strategies. He also is in the Molecular Biology and Cancer Genetics Program at the OSUCCC – James. His personal research is in the area of Ewing sarcoma. Lessnick formerly was at the University of Utah and served as director of the Center for Children’s Cancer Research at

Huntsman Cancer Institute.

[Read more:](#)

Top Nanobiotechnology Scientist Joins Ohio State Faculty

Peixuan Guo, PhD, one of the top nanobiotechnology experts in the world, was recruited from the University of Kentucky to Ohio State’s College of Medicine as the first Sylvan G. Frank Endowed Chair in Pharmaceuticals and Drug Delivery Systems. Guo was recruited in collaboration with Ohio State’s Dorothy M. Davis Heart and Lung Research Institute and has a joint appointment in the College of Medicine’s Department of Physiology and Cell Biology. He also is a member of the Translational Therapeutics Program at the OSUCCC – James, where his major research interest is in applying RNA nanotechnology to cancer therapy.

[Read more:](#)



KEY GRANTS, AWARDS AND HONORS

OSUCCC – James Researchers Gain Large Grants for New Cancer Studies

Cancer researchers at the OSUCCC – James recently received four large federal grants of more than \$1 million each to further their studies in various malignancies. Principal investigators for the research teams receiving these grants are **Craig Hofmeister, MD, MPH**; **Michael Tweedle, PhD**, **Michael Knopp, MD, PhD**, and **Thomas Rosol, DVM, PhD**; **Sujit Basu, PhD**; and **Altaf Wani, PhD**, and **Qianzheng Zhu, PhD**. [Read the grant summaries:](#)

Federal Grants Will Support Ohio State Research in Multiple Myeloma & Breast Cancer

OSUCCC – James researchers recently received two grants—one from the Department of Defense and one from the National Cancer Institute—of more than \$1 million each for separate studies in breast cancer and

multiple myeloma. Co-principal investigators (PIs) for the multiple myeloma grant are **Craig Hofmeister, MD, MPH**, of the OSUCCC – James, and **Flavia Pichiorri, PhD**, formerly of Ohio State and now of City of Hope Comprehensive Cancer Center in Duarte, Calif. (the grant is between both institutions). PI for the breast cancer grant is **Ramesh Ganju, PhD**, and the partnering investigator is **Xue-Feng Bai, MD, PhD**, both of the OSUCCC – James. [Read more:](#)

Gillison Elected to National Academy of Medicine

Maura Gillison, MD, PhD, professor in the Division of Medical Oncology at Ohio State and member of the Cancer Control Program at the OSUCCC – James, has been elected as a member of the prestigious National Academy of Medicine (NAM) for her distinguished contributions to the fields of cancer biology, tumor virology and epidemiology.



Gillison is among 70 newly elected regular members and nine newly elected international members announced by the NAM during its recent annual meeting. Election to the NAM, considered one of the highest honors in the fields of health and medicine, recognizes individuals who have demonstrated outstanding professional achievement and commitment to service. Gillison, who also holds the Jeg Coughlin Chair in Cancer Research, is a head and neck medical oncologist and molecular epidemiologist whose lab team focuses on the role of human papillomavirus (HPV) infection in head and neck malignancies. [Read more:](#)

Drs. Caligiuri, Retchin & Allen Honored as Outstanding Leaders

Becker's Hospital Review, a monthly publication offering up-to-date business and legal news and analysis relating to hospitals and health systems, featured five Ohioans—including three associated with Ohio State—on its [2016 list of 110 physician leaders to know](#).

The trade publication's list, which featured hospital and health system presidents and CEOs who also hold medical degrees, included OSUCCC Director and James CEO **Michael A. Caligiuri, MD**; Ohio State University Wexner Medical Center CEO **Sheldon Retchin, MD, MSPH**; and Nationwide Children's Hospital CEO **Steven Allen, MD**. The list highlighted those who have "demonstrated outstanding leadership and clinical expertise throughout their careers, leading initiatives to improve their organizations and the health care of the communities they serve."



Byrd Among 4 New Leaders Elected to ASH Executive Committee

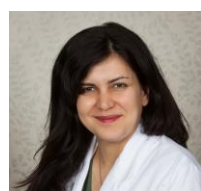
John C. Byrd, MD, a Distinguished University Professor at Ohio State, where he also directs the Division of Hematology and is a co-leader of the Leukemia Research Program, has been elected to a four-year term as a **councilor for the American Society of Hematology (ASH)**—the world's largest professional society concerned with the causes and treatment of blood disorders. Byrd, who holds the

D. Warren Brown Designated Chair in Leukemia Research at Ohio State, is one of four people elected to the ASH Executive Committee for terms that will begin after the [2016 ASH Annual Meeting](#), which will be held Dec. 3-6 in San Diego. [Read more:](#)

The James Named Designated Centre of Integrated Oncology and Palliative Care

The James is among 14 institutions around the world that were named as [Designated Centres of Integrated Oncology and Palliative Care](#) by the European Society for Medical Oncology (ESMO) at the ESMO 2016 Congress in Copenhagen, Denmark. The Designated Centre distinction is now held by 200 institutions in 42 countries.

The ESMO Designated Centres Program is the premier initiative worldwide for championing integrated programs in oncology and palliative care to ease the physical and mental suffering of cancer patients during treatment and at the end of life. Since 2003 the distinction, which is valid for three years, has recognized cancer centers that achieve a high standard of integration of medical oncology and palliative care.



Lustberg Appointed as Vice Chair of Multinational Study Group

Maryam Lustberg, MD, MPH, assistant professor in the Division of Medical Oncology at Ohio State and member of the Cancer Control Program at the OSUCCC – James, has been appointed **vice chair of the Neurological Complications Study Group within the Multinational Association of Supportive Care in Cancer (MASCC)**.

According to its website, the MASCC is a multidisciplinary organization dedicated to research and education in all aspects of supportive care for people with cancer, regardless of the stage of their disease. Founded in 1990, the MASCC includes members in more than 60 countries and on five continents.

James Oncology & Critical Care Advanced Practice Fellowship Earns ANCC 'Accreditation With Distinction'

After conducting an extensive evaluation, the American Nurses Credentialing Center's (ANCC) Commission on Accreditation has awarded "Accreditation with Distinction" status to The James Oncology and Critical Care Advanced Practice Fellowship. Only organizations that demonstrate no deficiencies requiring a progress report achieve Accreditation with Distinction status, according to the ANCC, which also reports that, as of September 2012, less than 10 percent of all ANCC-accredited organizations achieve this honor.



FEATURED STUDY

Insights on Lung Microenvironment Explain Why Cancer Spreads to Lungs

The same mechanisms that prevent people from having an inflammatory response to harmless environmental exposures in day-to-day life could also allow rogue cancer cells to spread to the lungs, according to research from the OSUCCC – James. Researchers have discovered and described how the lungs' underlying immune environment enables cancer to spread to the lungs. They reported their findings online ahead of print in the journal *Cell*.

David Clever, PhD, first author of the manuscript, is a medical student at Ohio State who completed this research under the mentorship of **Nicholas Restifo, MD**, of the National Cancer Institute during the doctoral portion of Clever's work in the Medical Scientist Training Program in The Ohio State University College of Medicine. [Read more:](#)

PROMINENT STUDIES



Pelotonia 'Idea Grant' Fuels New AML Research at Ohio State

Improving treatment options for one type of cancer is a launching point, not the finish line, for researchers at the OSUCCC – James. **John C. Byrd, MD**, director of the Division of Hematology, and his team developed a drug called ibrutinib for treating chronic lymphocytic leukemia (CLL). This daily pill sends CLL into remission and keeps it there in most cases, allowing patients to live with it, Byrd says. But this wasn't enough. **Rosa Lapalombella, PhD**, of the

Division of Hematology, says Byrd challenged colleagues to "move our knowledge of molecular therapeutics and molecular biology to another cancer." Lapalombella accepted the challenge, and with funding from a [Pelotonia Idea Grant](#) she has targeted acute myeloid leukemia (AML). [Read more:](#)

Argentine Tango Therapy Helps Restore Balance for Cancer Patients With Neuropathy

Dance as a form of therapy—specifically Argentine tango—has the potential to significantly improve balance and reduce falls risk among cancer patients experiencing peripheral neuropathy, according to new research conducted by a multidisciplinary research team at The Ohio State University. The pilot study was funded by Pelotonia.



Pelotonia fellow and pre-med/dance major **Mimi Lamantia** collaborated with **Lise Worthen-Chaudhari**, a physical rehabilitation specialist who studies movement at The Ohio State University Wexner Medical Center Neurological Institute, to conduct the research study.

[Read more:](#)

FEATURED CLINICAL TRIAL

Study Examines Novel Therapy in Patients With Relapsed Multiple Myeloma

Patient accrual is under way for a phase I clinical trial ([OSU-15004](#)) of a histone deacetylase (HDAC) inhibitor called AR-42 combined with pomalidomide in men and women age 18 or older with relapsed multiple myeloma (MM), an incurable blood cancer for which new therapies are needed. This pilot dose-escalation study examines the side effects and best dose of AR-42 when given with pomalidomide to treat patients whose MM has returned after a period of improvement.

The study is led by principal investigator **Yvonne Efebera, MD, MPH**, associate professor in the Division of Hematology at The Ohio State University and member of the Leukemia Research Program at the OSUCCC – James. Efebera and colleagues note that AR-42 may work to stop cancer by blocking an enzyme needed for cell growth, and pomalidomide is a chemotherapy drug that causes cancer cells to die. They hypothesize that giving AR-42 together with pomalidomide may cause patients to respond better to treatment. The primary objective of this study is to determine the maximum tolerated dose, safety and efficacy of this drug combination in these patients. Questions and referrals relating to this trial should be directed to study coordinator **Katie Stamper** at Kathleen.Stamper@osumc.edu or 614-366-6386.

To search for cancer clinical trials at Ohio State, visit go.osu.edu/cancerclinicaltrials. To receive a monthly e-newsletter with information on newly opened cancer clinical trials at the OSUCCC – James, send an email to cancerclinicaltrials@osumc.edu.

**Search
Clinical Trials**

PELOTONIA

Pelotonia 16 Raises More Than \$24 Million for Cancer Research at Ohio State

Pelotonia 16, the eighth installment of an annual grassroots bicycle tour that raises money for cancer research at the OSUCCC – James, raised a record **\$24,104,432, pushing the eight-year total past \$130 million**. Donors from all 50 states and more than 60 countries contributed to the funds raised by the event's 275 pelotons (riding groups). Specifically, when this year's tour unfolded Aug. 6-7 between Columbus and Gambier, Ohio (home to Kenyon College), 7,749 riders and 2,790 volunteers from 40 states and eight countries participated in six routes that ranged from 25 to 180 miles. [Read more:](#)